

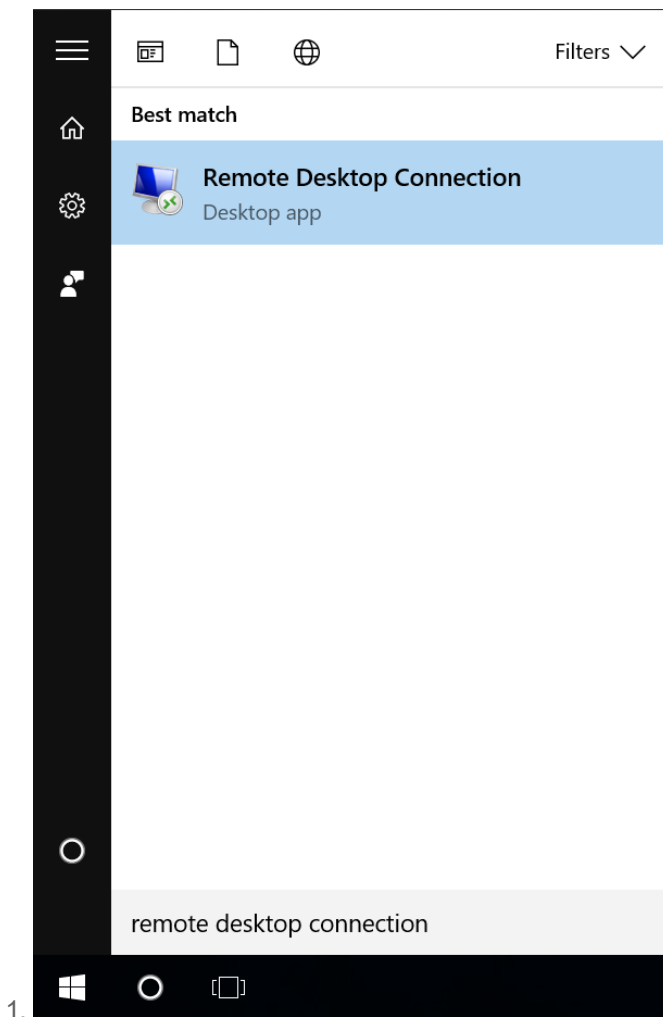
Remote Desktop for Windows

Sign up for BuckeyePass

1. Go to <https://buckeyepass.osu.edu> and click on the "Enroll / Manage" button on the right side.
2. Follow the steps to sign up and enroll a device.
3. Call (614) 688-HELP if you have questions or problems.

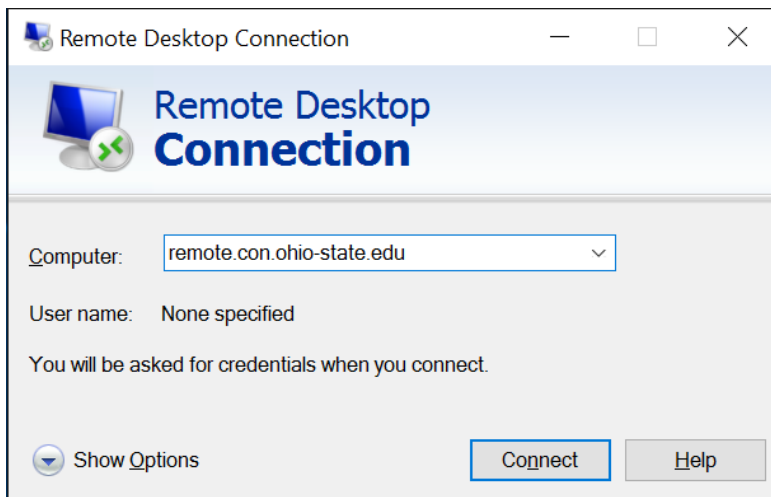
Launch Remote Desktop Connection

1. Click the start menu and type "remote desktop connection". (You can just start typing, the cursor does not need to be anywhere.)
2. Select *Remote Desktop Connection* when it appears.

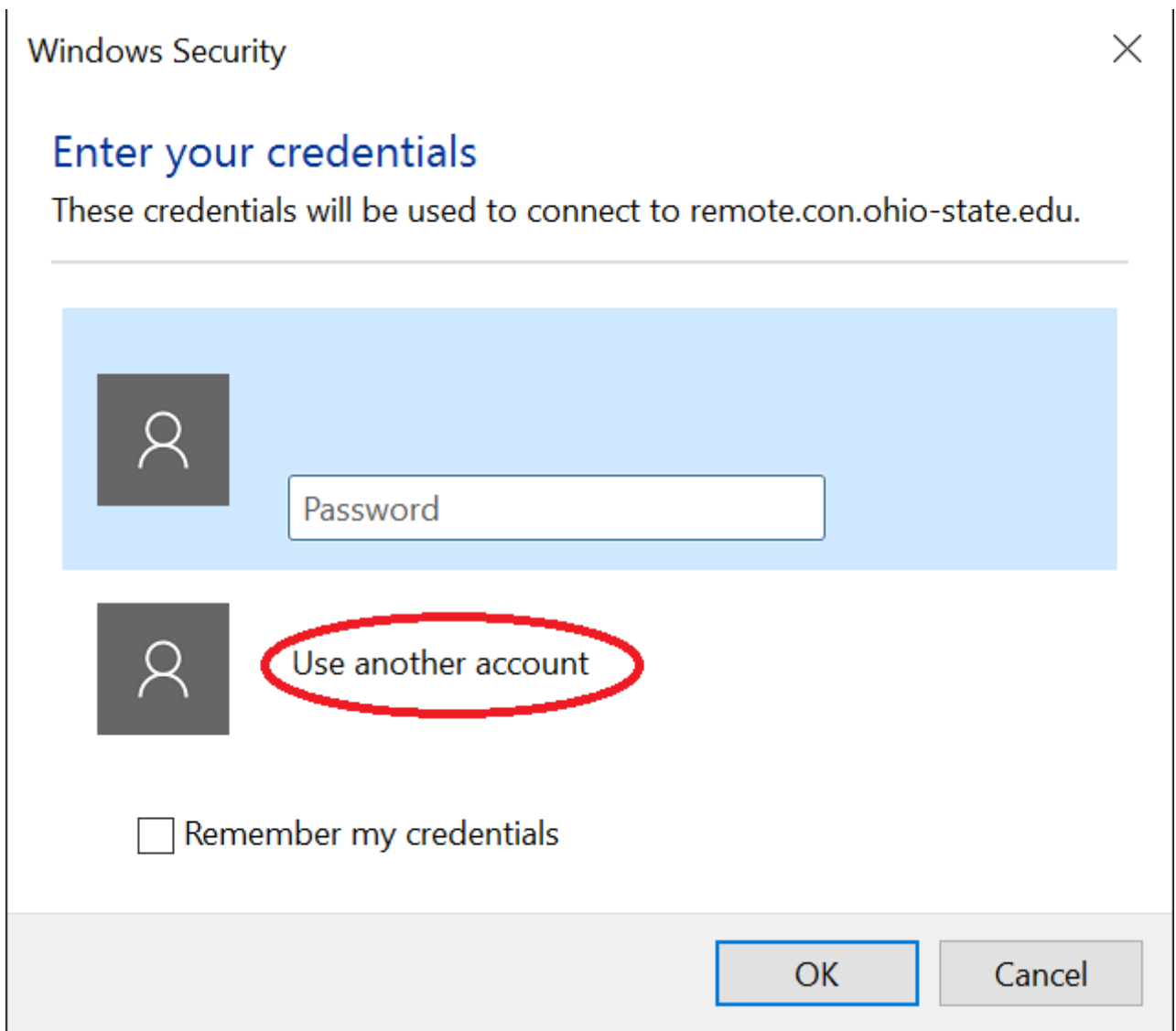


Connect to the Remote Desktop Server

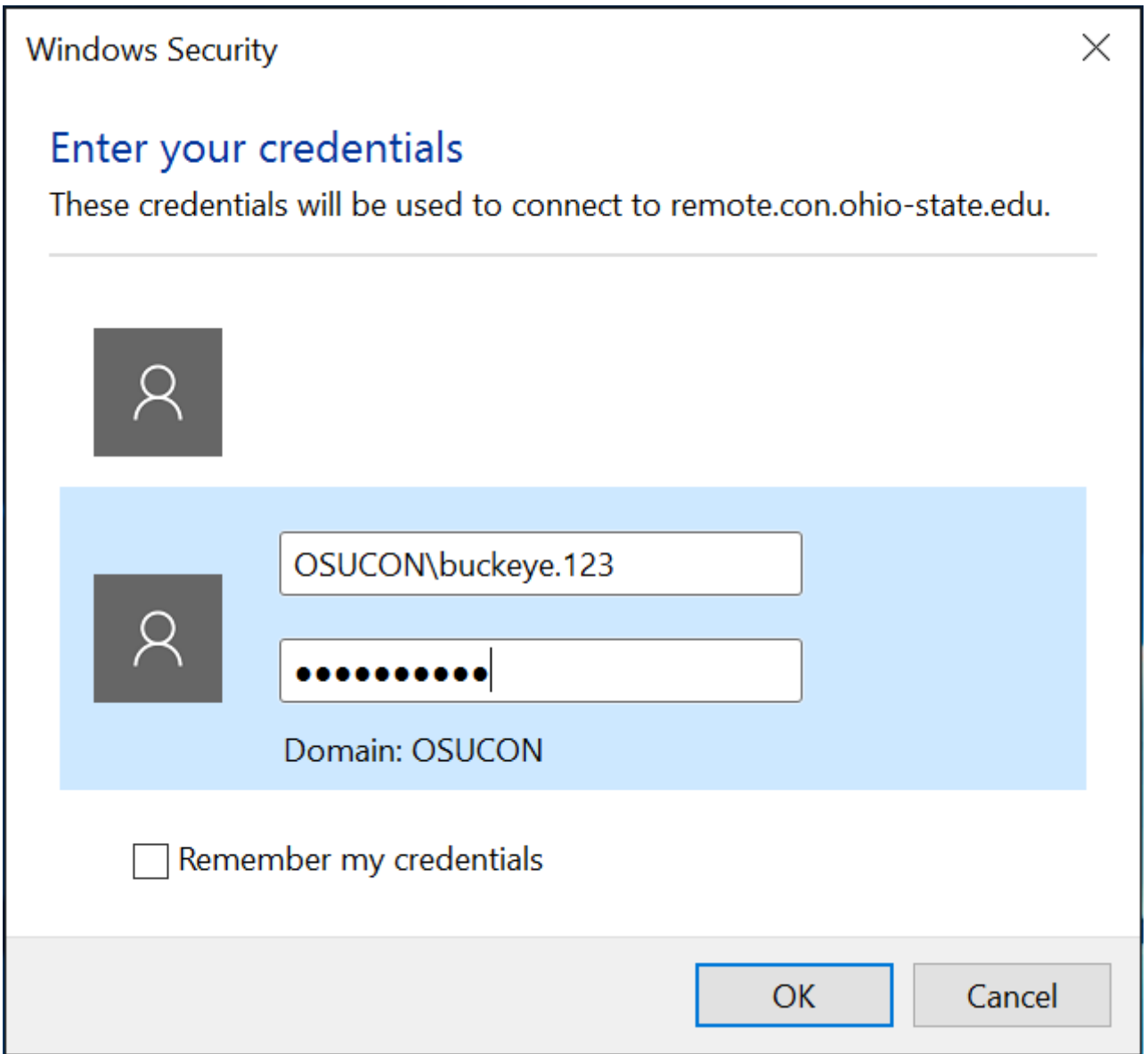
1. When the Remote Desktop Connection application appears, enter "remote.con.ohio-state.edu" into the *Computer* field and press Connect.



2. Click *Use another account*

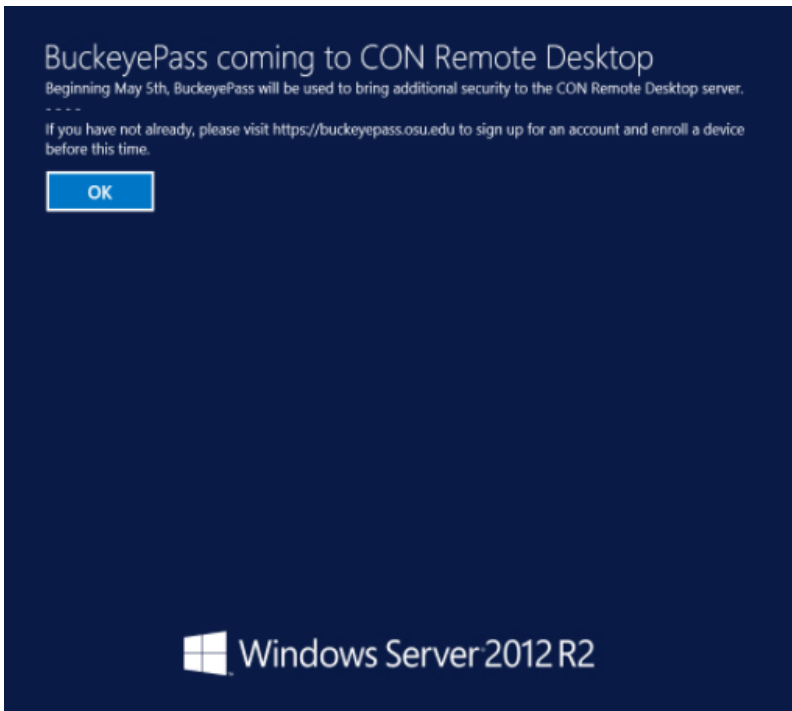


3. Enter your username and password, with "OSUCON\" in front of your username. You may choose to remember credentials if you prefer.



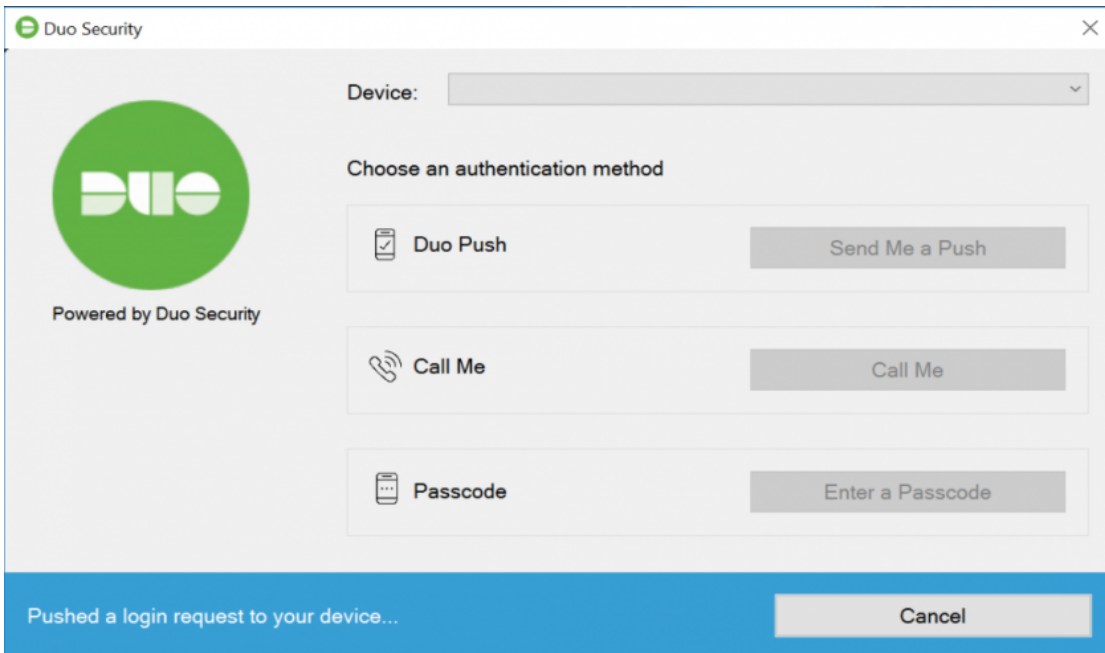
1.

4. You may see a message at logon. Press *OK* to continue.



1.

5. A Duo Security window will appear. If you have a mobile device configured, a login request will be pushed to it automatically. If you have phone or passcode authentication set up, please choose one of those options.



1.

6. You will receive a push notification on your mobile device.

Login Request
Protected by Duo Security



Ohio State University



10:52:28 EDT
April 11, 2017



Disconnecting from the server

1. When you are finished working, please log out of the server.
2. DO NOT click the little "X" in the window bar at the top. Instead, please do the following:
3. Click the Start Menu
4. Click your name in the top right.



5. Click *Sign out*

Brutus
Buckeye



Change account picture

Lock

Sign out

1.